

Luminaire Property

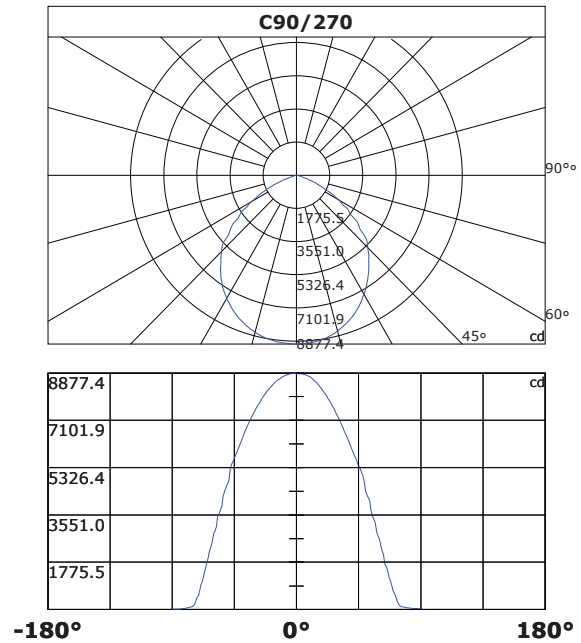
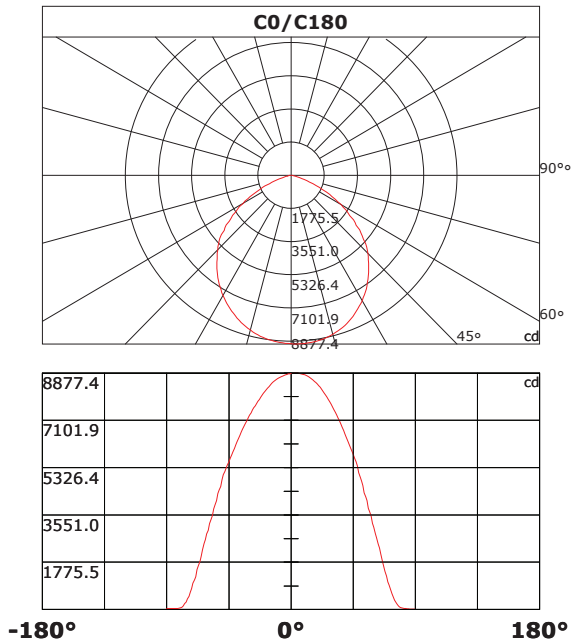
Luminaire Description: 200w
 Luminaire Categorie:
 Lamp Categorie:
 Lamp Description:
 Number of Lamp:
 Lamp Lumens(lm): 20908.96
 Luminous Length(m): 0.2
 Luminous Width(m): 0.2
 Luminous Height(m): 0.2

Voltage: 218.1 V
 Current: 1.22 A
 Power: 179.52 W
 Power Factor: 0.675
 Test Lab:
 Photometric Type: Type C
 Manufactory:

Photometric Results

CIE Class: Direct
 Measurement Flux: 20908.96 lm
 Efficiency: 116.4715 lm/W
 Central Intensity: 8858.444cd
 Max. Intensity: 8877.384cd
 Field Angle(10%Imax): Left: -73.5 Right:69.1

Max.Intensity Angle: C:0.0 G:2.0
 Beam Angle(50%Imax): L: -54.4 R:50.8
 Luminaire Efficacy Rating(LER) : 100.00%
 Upward Ratio: 0.0%
 Downward Ratio: 100.0%
 Beamwidth(50%Imax): C0/180=104.92 C90/270=106.39



HiDAY Spotlight LED

Light intensity data Unit[cd]

C\G	G0.0	G1.0	G2.0	G3.0	G4.0	G5.0	G6.0	G7.0	G8.0	G9.0
C0.0	8858.4	8873.7	8877.4	8874.2	8875.2	8874.0	8862.7	8853.2	8839.3	8826.1
C30.0	8858.4	8842.5	8851.5	8862.2	8867.6	8866.4	8862.7	8861.5	8853.7	8840.5
C60.0	8858.4	8854.9	8855.9	8855.2	8859.1	8870.3	8874.7	8871.0	8862.2	8852.5
C90.0	8858.4	8858.3	8854.2	8852.5	8849.6	8839.3	8824.2	8802.7	8777.3	8753.9
C120.0	8858.4	8871.8	8871.0	8863.7	8852.5	8842.5	8827.6	8814.4	8794.2	8769.7
C150.0	8858.4	8849.3	8842.0	8827.1	8812.0	8793.7	8771.0	8743.4	8711.2	8676.1
C180.0	8858.4	8852.5	8841.7	8828.8	8814.4	8792.5	8767.8	8742.7	8718.5	8686.5
C210.0	8858.4	8836.8	8828.8	8820.0	8802.0	8779.5	8753.2	8734.9	8710.0	8676.3
C240.0	8858.4	8836.6	8818.6	8807.8	8791.5	8765.9	8736.8	8703.9	8666.8	8634.3
C270.0	8858.4	8870.8	8869.8	8862.5	8851.8	8842.0	8830.3	8814.7	8794.4	8769.3
C300.0	8858.4	8872.7	8867.1	8857.1	8845.9	8836.1	8823.9	8800.3	8774.6	8745.8
C330.0	8858.4	8861.3	8867.6	8871.0	8871.5	8867.6	8862.0	8853.7	8840.8	8817.8
C360.0	8858.4	8873.7	8877.4	8874.2	8875.2	8874.0	8862.7	8853.2	8839.3	8826.1
C\G	G10.0	G11.0	G12.0	G13.0	G14.0	G15.0	G16.0	G17.0	G18.0	G19.0
C0.0	8810.0	8786.3	8761.7	8730.2	8694.1	8653.4	8605.3	8563.1	8521.3	8465.9
C30.0	8812.0	8780.0	8750.5	8717.3	8684.1	8644.3	8597.2	8548.2	8494.0	8442.0
C60.0	8839.5	8818.6	8784.9	8752.2	8716.3	8675.6	8634.3	8589.0	8537.2	8483.8
C90.0	8722.2	8680.2	8632.4	8582.6	8532.1	8483.0	8420.6	8353.9	8293.7	8226.6
C120.0	8746.8	8719.2	8685.3	8638.5	8593.6	8548.2	8496.5	8441.1	8387.4	8328.1
C150.0	8633.8	8591.1	8548.9	8499.9	8442.8	8392.0	8333.5	8268.3	8204.9	8140.7
C180.0	8653.6	8618.2	8581.4	8535.7	8481.1	8426.2	8373.0	8312.5	8251.7	8187.5
C210.0	8642.4	8604.6	8562.1	8517.0	8473.8	8424.2	8361.3	8299.5	8234.9	8165.6
C240.0	8595.3	8542.6	8492.1	8446.7	8388.4	8336.1	8278.3	8215.8	8148.5	8079.2
C270.0	8739.8	8709.7	8674.1	8639.9	8599.9	8556.0	8501.3	8452.5	8394.7	8333.5
C300.0	8707.8	8673.6	8636.3	8591.1	8547.0	8502.3	8451.1	8392.2	8334.4	8273.4
C330.0	8797.6	8775.1	8747.3	8714.8	8683.1	8642.4	8592.6	8547.0	8500.6	8443.8
C360.0	8810.0	8786.3	8761.7	8730.2	8694.1	8653.4	8605.3	8563.1	8521.3	8465.9
C\G	G20.0	G21.0	G22.0	G23.0	G24.0	G25.0	G26.0	G27.0	G28.0	G29.0
C0.0	8409.3	8348.8	8275.4	8200.9	8129.4	8045.3	7965.2	7886.4	7793.9	7709.3
C30.0	8384.9	8324.0	8254.2	8174.6	8097.0	8017.7	7928.6	7837.4	7744.1	7644.6
C60.0	8432.8	8367.1	8298.8	8231.0	8159.0	8073.3	7990.8	7901.5	7804.4	7722.2
C90.0	8155.1	8086.8	8005.2	7917.4	7829.8	7741.2	7643.8	7544.1	7444.3	7329.1
C120.0	8266.4	8198.0	8128.0	8056.3	7986.5	7911.3	7824.0	7739.5	7655.6	7554.8
C150.0	8074.1	8006.7	7935.9	7855.4	7775.9	7695.6	7602.6	7508.7	7420.6	7314.7
C180.0	8117.2	8045.7	7971.6	7889.3	7813.9	7738.1	7649.7	7568.7	7484.5	7386.2
C210.0	8102.4	8034.3	7957.2	7883.5	7804.4	7715.4	7628.0	7530.2	7440.1	7336.2
C240.0	8002.3	7912.8	7832.7	7748.8	7653.6	7558.7	7461.1	7365.4	7269.6	7165.8
C270.0	8270.0	8210.0	8140.0	8069.9	7995.5	7913.5	7830.8	7747.8	7657.3	7570.2
C300.0	8203.1	8135.1	8062.6	7983.0	7907.1	7827.6	7741.9	7661.4	7577.0	7482.8
C330.0	8386.4	8330.0	8260.0	8191.7	8123.4	8047.9	7973.5	7898.4	7809.6	7724.9
C360.0	8409.3	8348.8	8275.4	8200.9	8129.4	8045.3	7965.2	7886.4	7793.9	7709.3

Light intensity data Unit[cd]

C\G	G30.0	G31.0	G32.0	G33.0	G34.0	G35.0	G36.0	G37.0	G38.0	G39.0
C0.0	7617.7	7509.2	7409.1	7309.1	7204.9	7087.2	6968.7	6849.1	6718.8	6591.2
C30.0	7547.0	7444.3	7324.7	7209.0	7094.1	6980.4	6855.2	6735.4	6614.1	6476.0
C60.0	7624.8	7514.0	7408.6	7299.3	7182.4	7066.5	6951.3	6820.3	6694.1	6579.5
C90.0	7229.0	7131.2	7021.1	6890.8	6773.2	6655.8	6527.2	6407.7	6284.2	6150.7
C120.0	7457.2	7362.3	7255.9	7153.4	7049.2	6935.7	6829.6	6715.9	6595.6	6481.1
C150.0	7205.6	7108.7	7002.3	6873.5	6765.9	6650.5	6525.8	6413.3	6304.0	6194.2
C180.0	7295.7	7200.7	7094.3	6991.8	6890.8	6769.0	6659.0	6544.5	6430.4	6304.9
C210.0	7239.3	7136.8	7024.3	6923.8	6825.0	6704.4	6589.2	6471.4	6331.8	6195.1
C240.0	7051.9	6938.2	6813.7	6665.1	6540.2	6416.0	6282.0	6176.3	6064.8	5938.7
C270.0	7476.9	7371.5	7273.7	7175.6	7072.1	6950.1	6842.3	6732.0	6592.4	6454.3
C300.0	7393.8	7300.0	7195.4	7085.6	6980.4	6858.6	6740.7	6624.8	6480.4	6355.2
C330.0	7636.5	7538.2	7444.0	7345.2	7239.5	7122.2	7008.2	6888.4	6758.1	6640.2
C360.0	7617.7	7509.2	7409.1	7309.1	7204.9	7087.2	6968.7	6849.1	6718.8	6591.2
C\G	G40.0	G41.0	G42.0	G43.0	G44.0	G45.0	G46.0	G47.0	G48.0	G49.0
C0.0	6466.2	6328.6	6208.1	6079.2	5943.5	5821.1	5688.8	5539.7	5392.1	5135.1
C30.0	6349.4	6223.2	6105.6	5992.3	5849.9	5727.3	5614.4	5504.1	5368.6	5125.6
C60.0	6460.8	6358.1	6232.5	6102.4	6001.1	5898.4	5774.9	5627.6	5204.4	5042.6
C90.0	6022.4	5897.4	5775.7	5662.4	5524.3	5398.9	5287.1	5173.4	5036.3	4787.9
C120.0	6367.2	6230.5	6108.7	5992.1	5869.4	5755.4	5640.2	5502.3	5390.1	5273.2
C150.0	6083.4	5971.1	5847.4	5733.2	5621.2	5370.6	5180.3	5065.1	4933.5	4662.9
C180.0	6181.0	6049.2	5918.2	5799.6	5688.3	5559.4	5437.4	5312.0	5177.1	5061.2
C210.0	6054.6	5905.0	5771.0	5643.1	5510.4	5388.9	5263.7	5131.4	5006.5	4614.6
C240.0	5828.4	5714.4	5357.9	5080.5	4965.3	4850.6	4721.8	4325.7	4133.7	4010.7
C270.0	6325.2	6181.5	6059.0	5939.9	5801.5	5677.8	5562.6	5439.6	5251.0	4843.3
C300.0	6227.6	6090.4	5945.7	5816.4	5678.3	5549.2	5417.5	5285.2	5138.3	4950.6
C330.0	6529.7	6393.7	6282.5	6168.5	6035.0	5909.1	5748.6	5457.0	5326.4	5197.4
C360.0	6466.2	6328.6	6208.1	6079.2	5943.5	5821.1	5688.8	5539.7	5392.1	5135.1
C\G	G50.0	G51.0	G52.0	G53.0	G54.0	G55.0	G56.0	G57.0	G58.0	G59.0
C0.0	4969.7	4828.1	4659.3	4375.7	4234.2	4089.2	3796.4	3651.2	3494.8	3240.3
C30.0	4748.3	4617.8	4496.3	4369.6	4071.0	3765.2	3642.0	3504.8	3245.9	2971.7
C60.0	4920.1	4805.0	4682.7	4213.0	4073.9	3964.8	3840.8	3417.0	3285.7	3163.9
C90.0	4441.6	4307.4	4190.5	4074.8	3707.9	3496.0	3378.0	3265.9	2898.9	2754.0
C120.0	5149.5	4888.4	4700.5	4576.8	4421.4	4151.5	3997.0	3855.5	3613.9	3445.5
C150.0	4501.9	4373.0	4144.6	3947.7	3814.2	3561.4	3406.5	3269.1	3006.3	2898.9
C180.0	4868.6	4616.3	4491.6	4358.7	4091.4	3914.3	3782.3	3531.0	3358.2	3220.8
C210.0	4403.8	4283.5	4165.9	4028.0	3614.4	3485.8	3372.8	3247.1	2869.2	2753.2
C240.0	3898.4	3581.5	3339.1	3230.1	3000.7	2713.2	2532.2	2371.4	2079.3	1921.1
C270.0	4698.1	4575.3	4453.6	4268.8	3872.8	3756.7	3622.5	3497.3	3098.1	2976.5
C300.0	4701.2	4539.5	4397.7	4146.8	3950.4	3818.4	3577.3	3397.0	3245.2	2995.1
C330.0	4959.2	4743.2	4610.7	4416.5	4169.8	4035.6	3865.7	3614.1	3480.9	3230.1
C360.0	4969.7	4828.1	4659.3	4375.7	4234.2	4089.2	3796.4	3651.2	3494.8	3240.3

HiDAY Spotlight LED

Light intensity data Unit[cd]

C\G	G60.0	G61.0	G62.0	G63.0	G64.0	G65.0	G66.0	G67.0	G68.0	G69.0
C0.0	3088.0	2850.1	2689.6	2453.8	2310.6	2089.3	1823.8	1620.0	1438.2	1256.4
C30.0	2844.0	2719.3	2364.3	2268.6	2095.1	1817.7	1712.3	1380.2	1294.3	1034.1
C60.0	2940.7	2663.0	2556.8	2319.4	2091.7	1997.0	1675.4	1596.6	1309.9	1225.2
C90.0	2646.1	2383.3	2188.6	2061.9	1711.8	1610.5	1453.4	1216.7	1077.6	888.7
C120.0	3315.5	3065.1	2937.0	2717.4	2559.3	2405.3	2167.4	1892.4	1767.9	1564.6
C150.0	2643.7	2532.7	2295.2	2195.9	1974.3	1779.6	1628.1	1432.9	1249.4	1084.2
C180.0	2969.7	2838.9	2619.5	2482.6	2232.5	2002.4	1796.5	1676.7	1505.1	1228.9
C210.0	2589.0	2301.6	2161.5	1913.8	1672.3	1505.8	1217.7	1113.7	898.7	745.5
C240.0	1693.0	1503.4	1289.9	1093.4	908.2	723.3	510.5	339.2	276.2	201.8
C270.0	2828.9	2538.3	2359.2	2172.2	1921.4	1748.9	1508.8	1318.2	1095.9	934.8
C300.0	2821.8	2432.6	2303.0	2082.7	1931.7	1618.1	1446.0	1294.0	1071.0	927.3
C330.0	3066.8	2847.0	2683.0	2443.1	2303.5	2072.9	1866.7	1725.0	1536.1	1338.9
C360.0	3088.0	2850.1	2689.6	2453.8	2310.6	2089.3	1823.8	1620.0	1438.2	1256.4
C\G	G70.0	G71.0	G72.0	G73.0	G74.0	G75.0	G76.0	G77.0	G78.0	G79.0
C0.0	1041.0	910.4	732.8	590.8	472.7	357.5	250.4	179.6	118.6	75.4
C30.0	940.9	727.4	569.8	484.6	333.1	211.3	122.3	110.6	101.5	90.8
C60.0	962.6	901.4	686.7	484.6	351.6	205.2	143.0	133.7	120.1	106.6
C90.0	704.0	617.9	460.9	317.5	206.0	118.6	107.4	97.1	86.9	75.9
C120.0	1342.6	1182.5	1034.1	823.3	702.0	561.5	451.7	315.8	249.2	171.3
C150.0	951.2	790.6	632.0	516.1	396.0	261.8	169.8	107.9	81.3	73.2
C180.0	1108.1	988.8	787.0	653.5	488.1	405.5	280.4	215.2	132.5	84.7
C210.0	564.9	398.0	262.8	173.0	107.6	95.9	84.4	73.0	63.4	52.7
C240.0	132.3	120.3	106.4	95.4	82.0	69.3	61.2	51.2	43.2	36.4
C270.0	727.4	534.6	434.3	294.0	184.0	109.1	97.6	84.4	73.0	63.9
C300.0	751.1	622.7	481.7	373.8	283.1	193.5	126.6	81.0	50.5	44.2
C330.0	1156.1	989.0	800.9	637.8	493.6	341.1	224.2	111.5	76.4	66.4
C360.0	1041.0	910.4	732.8	590.8	472.7	357.5	250.4	179.6	118.6	75.4
C\G	G80.0	G81.0	G82.0	G83.0	G84.0	G85.0	G86.0	G87.0	G88.0	G89.0
C0.0	58.3	50.5	43.5	35.1	31.0	25.8	21.2	18.8	14.9	13.9
C30.0	80.8	71.0	63.7	56.1	51.5	45.4	42.7	39.8	38.1	35.1
C60.0	96.4	86.6	73.9	65.6	59.0	51.7	46.6	40.2	35.6	29.8
C90.0	67.4	58.8	53.4	47.6	42.9	38.1	36.1	33.9	32.0	32.0
C120.0	114.9	74.2	61.5	54.6	48.8	42.0	38.8	37.6	35.9	34.9
C150.0	64.4	57.8	51.5	47.3	43.2	38.1	36.6	32.2	32.2	33.4
C180.0	58.3	52.0	46.6	42.9	40.8	38.6	36.9	35.4	35.6	35.4
C210.0	44.6	37.1	31.0	24.9	20.7	17.3	13.7	12.2	10.3	9.3
C240.0	29.3	22.9	18.8	16.1	14.7	11.2	10.7	9.3	8.1	7.8
C270.0	54.4	45.6	36.4	30.5	25.8	20.3	17.8	14.4	12.5	11.0
C300.0	37.8	32.0	27.1	23.9	21.0	19.0	15.9	14.4	11.0	8.8
C330.0	57.8	48.8	41.3	34.7	28.8	24.2	18.8	15.6	11.7	10.7
C360.0	58.3	50.5	43.5	35.1	31.0	25.8	21.2	18.8	14.9	13.9

Light intensity data Unit[cd]

C\G	G90.0									
C0.0	11.7									
C30.0	34.9									
C60.0	28.1									
C90.0	30.7									
C120.0	34.7									
C150.0	33.9									
C180.0	35.6									
C210.0	8.1									
C240.0	7.8									
C270.0	8.5									
C300.0	7.8									
C330.0	7.3									
C360.0	11.7									

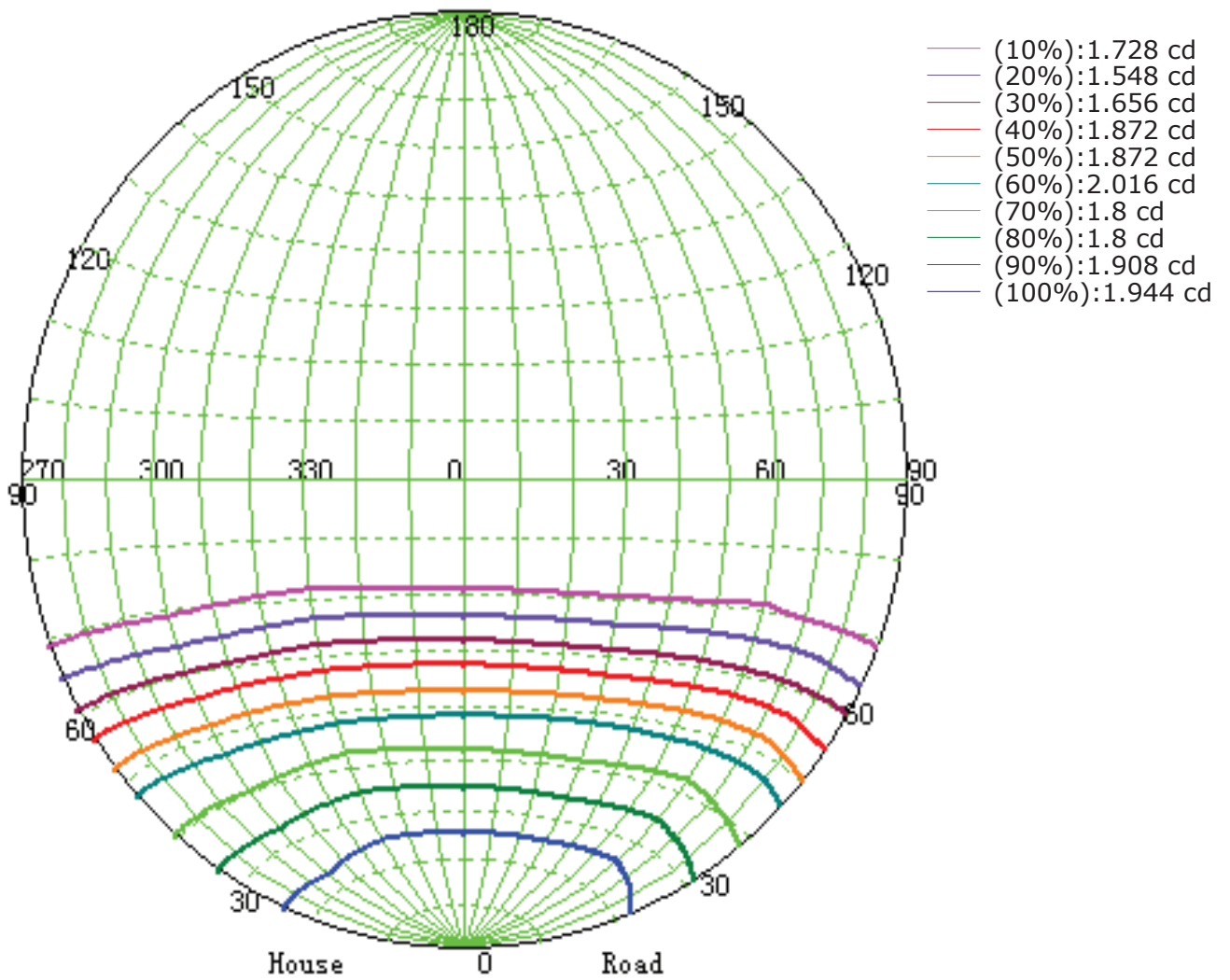
Zonal Luminous Flux Data

Gamma [°]	I _{mean} [cd]	Zonal Flux [lm]	Sum Flux [lm]	Zonal Flux [%]	Sum Flux [%]
0.0	8858.44	0.00	0.00	0.00	0.00
0.0-1.0	8856.77	8.48	8.48	0.04	0.04
1.0-2.0	8853.81	25.42	33.90	0.12	0.16
2.0-3.0	8848.52	42.34	76.23	0.20	0.36
3.0-4.0	8841.08	59.21	135.45	0.28	0.65
4.0-5.0	8830.81	76.02	211.47	0.36	1.01
5.0-6.0	8816.41	92.74	304.21	0.44	1.45
6.0-7.0	8799.69	109.34	413.55	0.52	1.98
7.0-8.0	8778.59	125.80	539.36	0.60	2.58
8.0-9.0	8754.08	142.09	681.45	0.68	3.26
9.0-10.0	8725.07	158.18	839.63	0.76	4.02
10.0-11.0	8691.62	174.03	1013.66	0.83	4.85
11.0-12.0	8654.75	189.62	1203.28	0.91	5.75
12.0-13.0	8613.83	204.93	1408.21	0.98	6.73
13.0-14.0	8569.69	219.95	1628.16	1.05	7.79
14.0-15.0	8523.65	234.66	1862.83	1.12	8.91
15.0-16.0	8470.41	249.01	2111.84	1.19	10.10
16.0-17.0	8415.27	262.96	2374.79	1.26	11.36
17.0-18.0	8358.61	276.56	2651.36	1.32	12.68
18.0-19.0	8297.50	289.78	2941.14	1.39	14.07
19.0-20.0	8233.68	302.57	3243.71	1.45	15.51
20.0-21.0	8166.61	314.92	3558.62	1.51	17.02
21.0-22.0	8093.47	326.75	3885.38	1.56	18.58
22.0-23.0	8016.82	338.04	4223.41	1.62	20.20
23.0-24.0	7939.64	348.87	4572.28	1.67	21.87
24.0-25.0	7857.13	359.18	4931.46	1.72	23.59
25.0-26.0	7770.02	368.88	5300.34	1.76	25.35
26.0-27.0	7682.46	378.05	5678.39	1.81	27.16
27.0-28.0	7591.74	386.71	6065.10	1.85	29.01
28.0-29.0	7495.05	394.71	6459.81	1.89	30.89
29.0-30.0	7397.95	402.11	6861.92	1.92	32.82
30.0-31.0	7296.26	408.92	7270.84	1.96	34.77
31.0-32.0	7188.93	414.98	7685.82	1.98	36.76
32.0-33.0	7076.85	420.28	8106.10	2.01	38.77
33.0-34.0	6968.14	425.04	8531.14	2.03	40.80
34.0-35.0	6849.70	429.13	8960.27	2.05	42.85
35.0-36.0	6731.60	432.43	9392.70	2.07	44.92
36.0-37.0	6614.92	435.29	9827.99	2.08	47.00
37.0-38.0	6489.05	437.39	10265.39	2.09	49.10
38.0-39.0	6363.42	438.69	10704.07	2.10	51.19
39.0-40.0	6241.31	439.61	11143.68	2.10	53.30

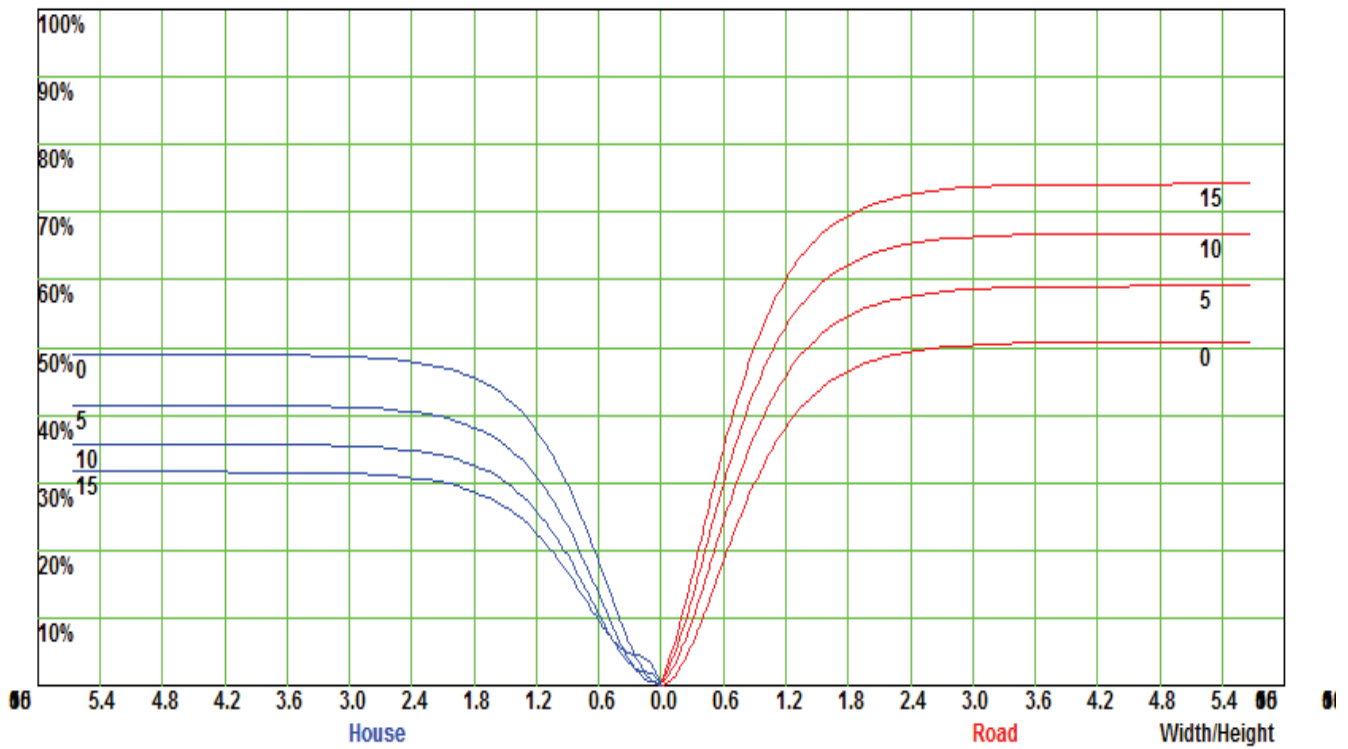
Zonal Luminous Flux Data

Gamma [°]	I _{mean} [cd]	Zonal Flux [lm]	Sum Flux [lm]	Zonal Flux [%]	Sum Flux [%]
40.0-41.0	6111.94	439.89	11583.58	2.10	55.40
41.0-42.0	5967.68	438.87	12022.45	2.10	57.50
42.0-43.0	5834.14	437.17	12459.62	2.09	59.59
43.0-44.0	5707.35	435.61	12895.23	2.08	61.67
44.0-45.0	5575.56	433.62	13328.84	2.07	63.75
45.0-46.0	5444.78	430.98	13759.82	2.06	65.81
46.0-47.0	5280.26	426.56	14186.39	2.04	67.85
47.0-48.0	5113.17	420.16	14606.54	2.01	69.86
48.0-49.0	4892.10	410.87	15017.42	1.97	71.82
49.0-50.0	4688.37	399.44	15416.86	1.91	73.73
50.0-51.0	4513.25	389.31	15806.16	1.86	75.60
51.0-52.0	4361.05	380.80	16186.97	1.82	77.42
52.0-53.0	4167.22	370.98	16557.95	1.77	79.19
53.0-54.0	3918.50	356.38	16914.33	1.70	80.90
54.0-55.0	3729.35	341.39	17255.72	1.63	82.53
55.0-56.0	3567.78	329.74	17585.46	1.58	84.10
56.0-57.0	3385.11	317.90	17903.36	1.52	85.63
57.0-58.0	3139.70	301.73	18205.09	1.44	87.07
58.0-59.0	2964.27	285.36	18490.45	1.36	88.43
59.0-60.0	2787.28	271.72	18762.18	1.30	89.73
60.0-61.0	2556.27	255.00	19017.18	1.22	90.95
61.0-62.0	2370.63	237.41	19254.59	1.14	92.09
62.0-63.0	2183.75	221.50	19476.09	1.06	93.15
63.0-64.0	1976.04	204.12	19680.21	0.98	94.12
64.0-65.0	1780.91	185.93	19866.13	0.89	95.01
65.0-66.0	1567.21	167.05	20033.18	0.80	95.81
66.0-67.0	1383.79	148.38	20181.56	0.71	96.52
67.0-68.0	1210.02	131.39	20312.95	0.63	97.15
68.0-69.0	1035.87	114.57	20427.53	0.55	97.70
69.0-70.0	865.19	97.63	20525.16	0.47	98.16
70.0-71.0	731.98	82.55	20607.71	0.39	98.56
71.0-72.0	582.44	68.35	20676.06	0.33	98.89
72.0-73.0	453.71	54.18	20730.25	0.26	99.15
73.0-74.0	341.65	41.81	20772.06	0.20	99.35
74.0-75.0	244.20	30.95	20803.02	0.15	99.49
75.0-76.0	176.59	22.34	20825.36	0.11	99.60
76.0-77.0	130.08	16.35	20841.71	0.08	99.68
77.0-78.0	99.71	12.30	20854.01	0.06	99.74
78.0-79.0	78.45	9.57	20863.58	0.05	99.78
79.0-80.0	63.71	7.66	20871.24	0.04	99.82
80.0-81.0	53.12	6.32	20877.56	0.03	99.85

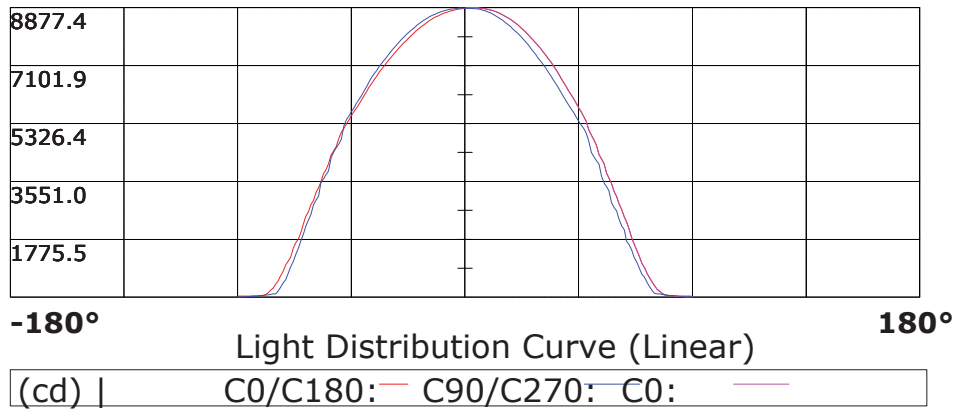
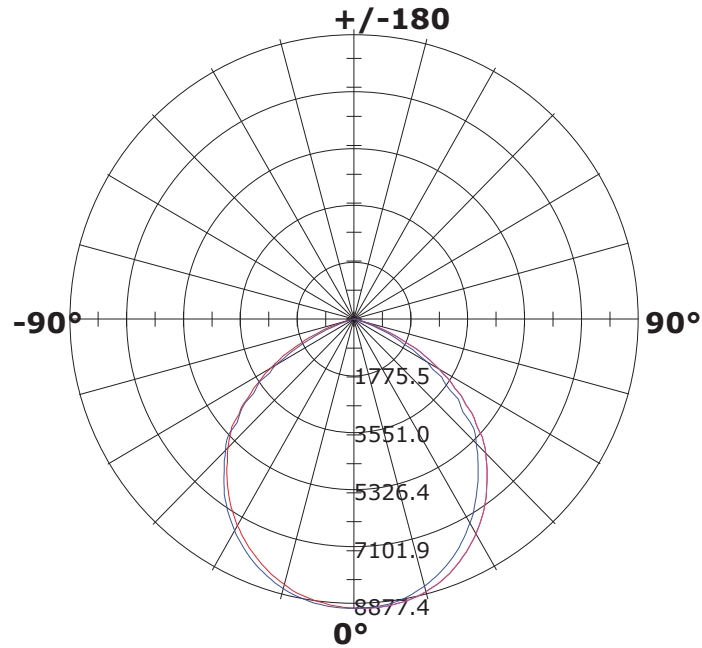
Iso-Candela [cd]



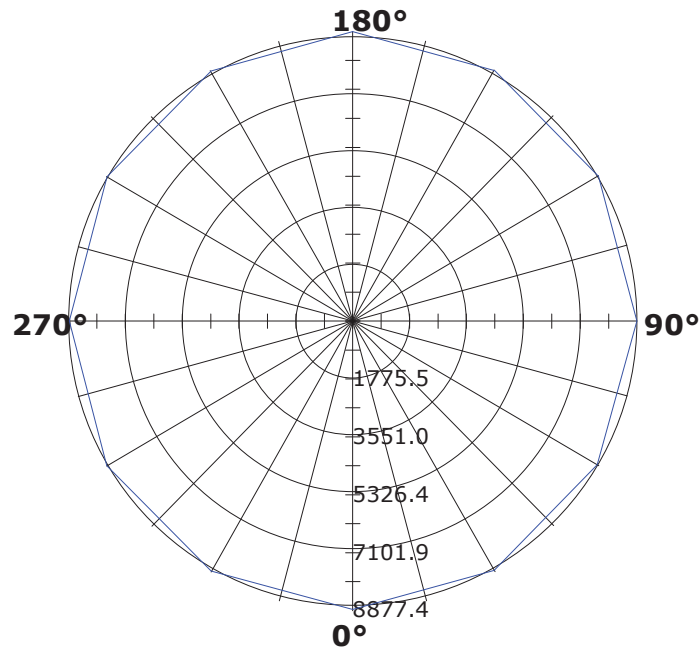
Coefficient Utilization Curve



Light Distribution Curve [Unit: cd]



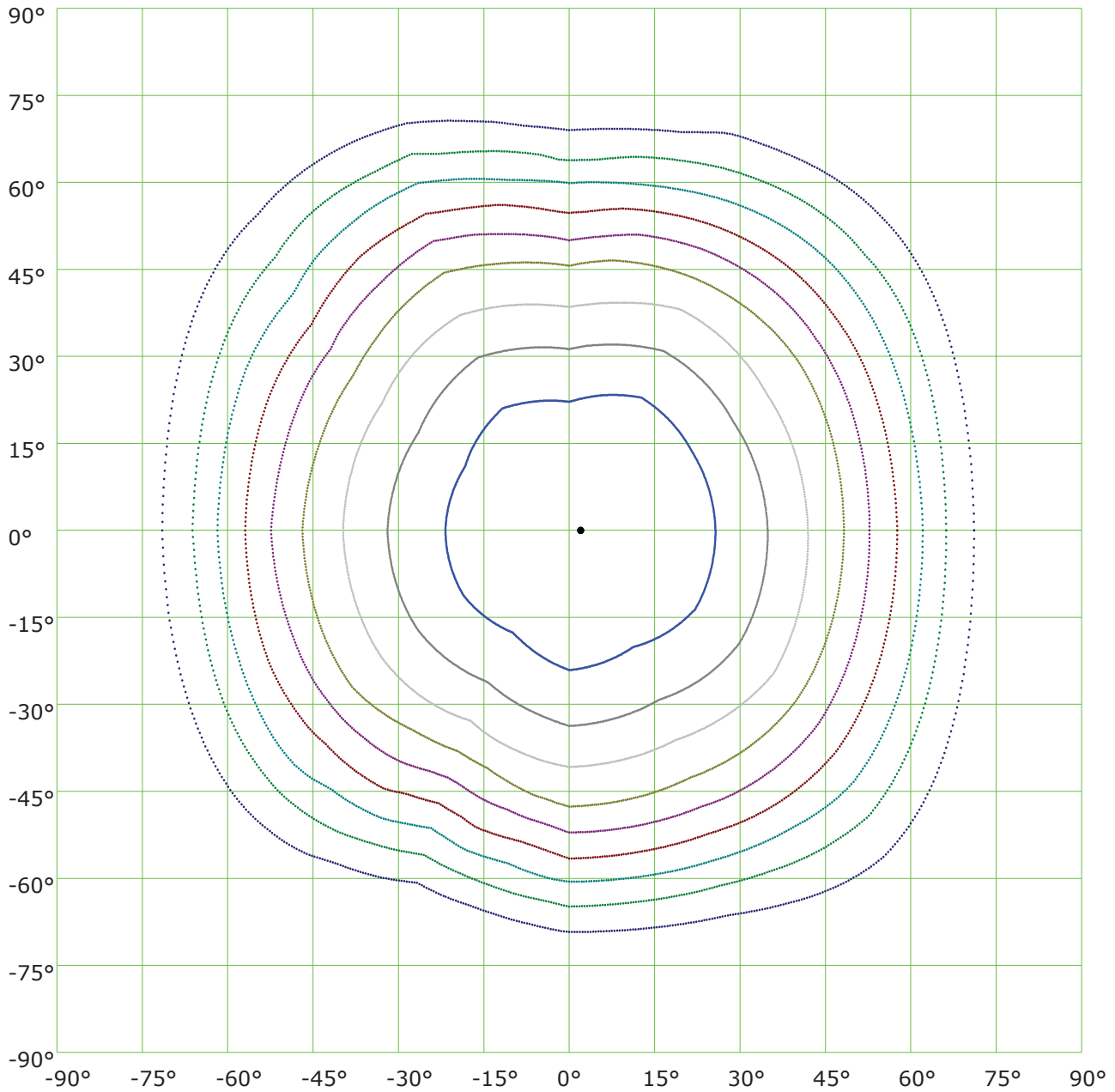
HiDAY Spotlight LED



8877.4							
7101.9							
5326.4							
3551.0							
1775.5							

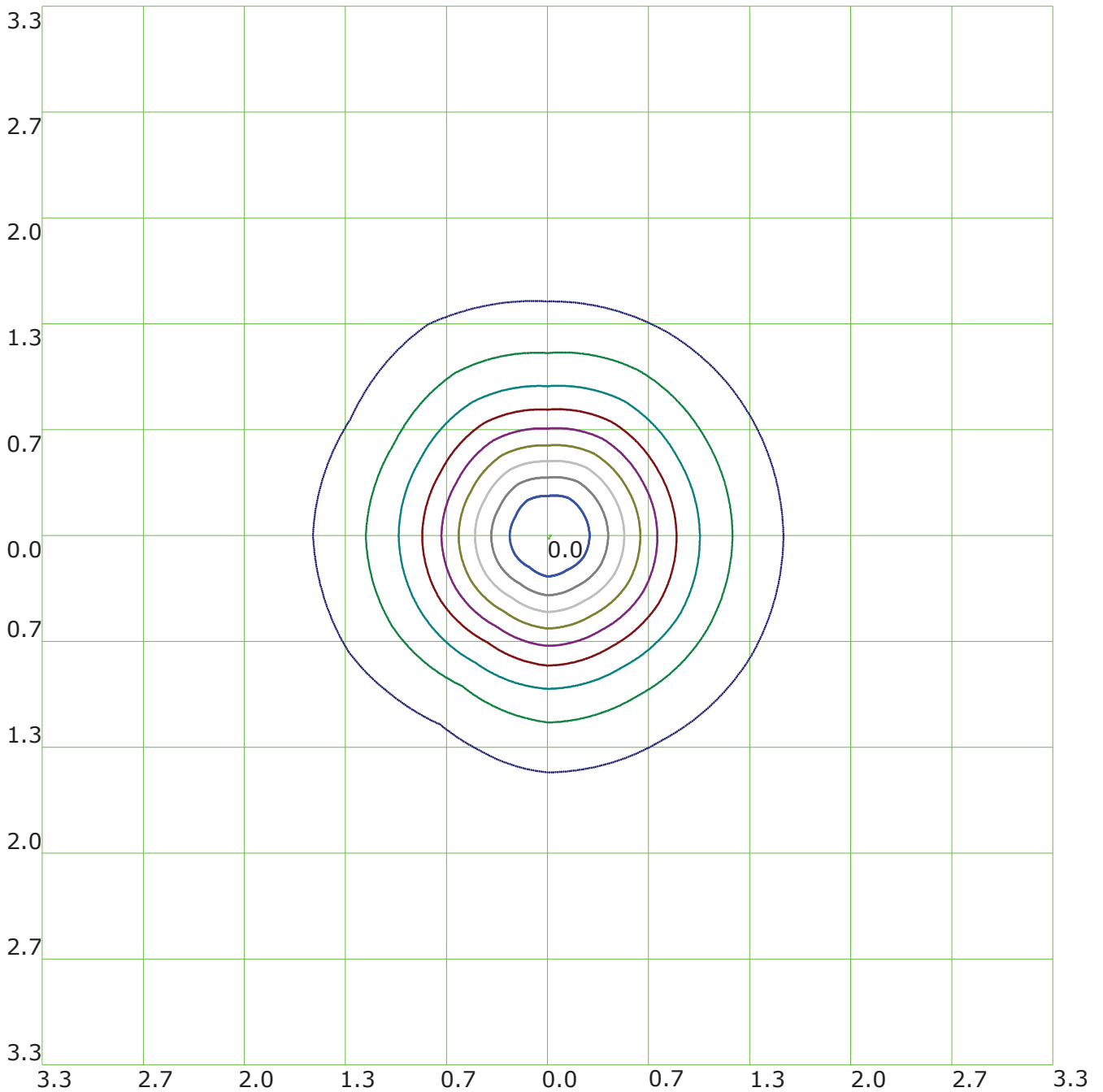
-180° Light Distribution Curve (Linear) **180°**
 (cd) | γ_2 : —

Isocandela(rectangle)



—(10%): 887.7cd	—(20%): 1775.5cd	—(30%): 2663.2cd	—(40%): 3551.cd
—(50%): 4438.7cd	—(60%): 5326.4cd	—(70%): 6214.2cd	—(80%): 7101.9cd
—(90%): 7989.6cd	—(100%): 8877.4cd		

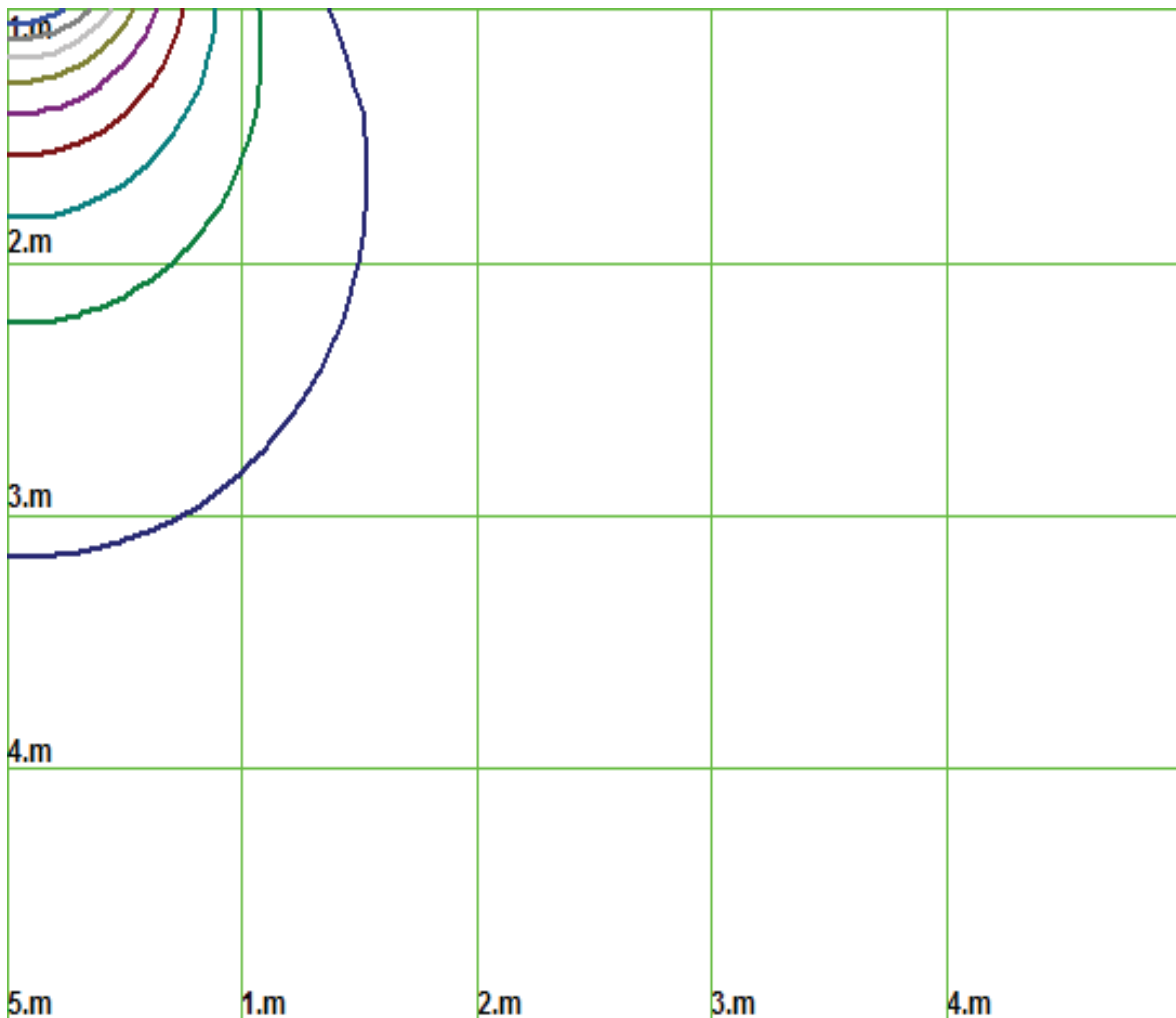
Isolx curve



Height: 1 m

- (10%): 887.7lx
- (20%): 1775.5lx
- (30%): 2663.2lx
- (40%): 3551.1lx
- (50%): 4438.7lx
- (60%): 5326.4lx
- (70%): 6214.2lx
- (80%): 7101.9lx
- (90%): 7989.7lx
- (100%): 8868.5lx

Space Isolx Curve



— (10%): 887.7lx — (20%): 1775.5lx — (30%): 2663.2lx — (40%): 3551.1lx
— (50%): 4438.7lx — (60%): 5326.4lx — (70%): 6214.2lx — (80%): 7101.9lx
— (90%): 7989.7lx — (100%): 8868.5lx

Luminance Limiting Curve

Diameter: 200mm

Length: 200mm

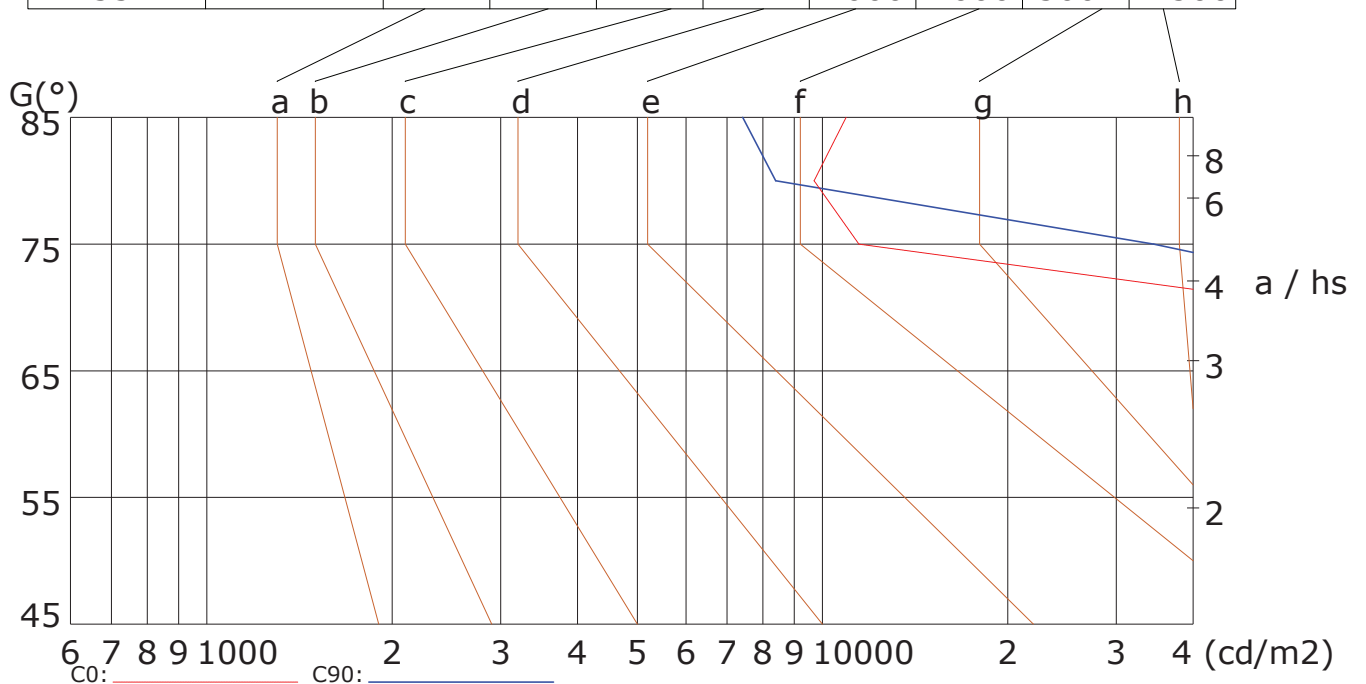
Width: 200mm

Height: 200mm

(cd/m²)

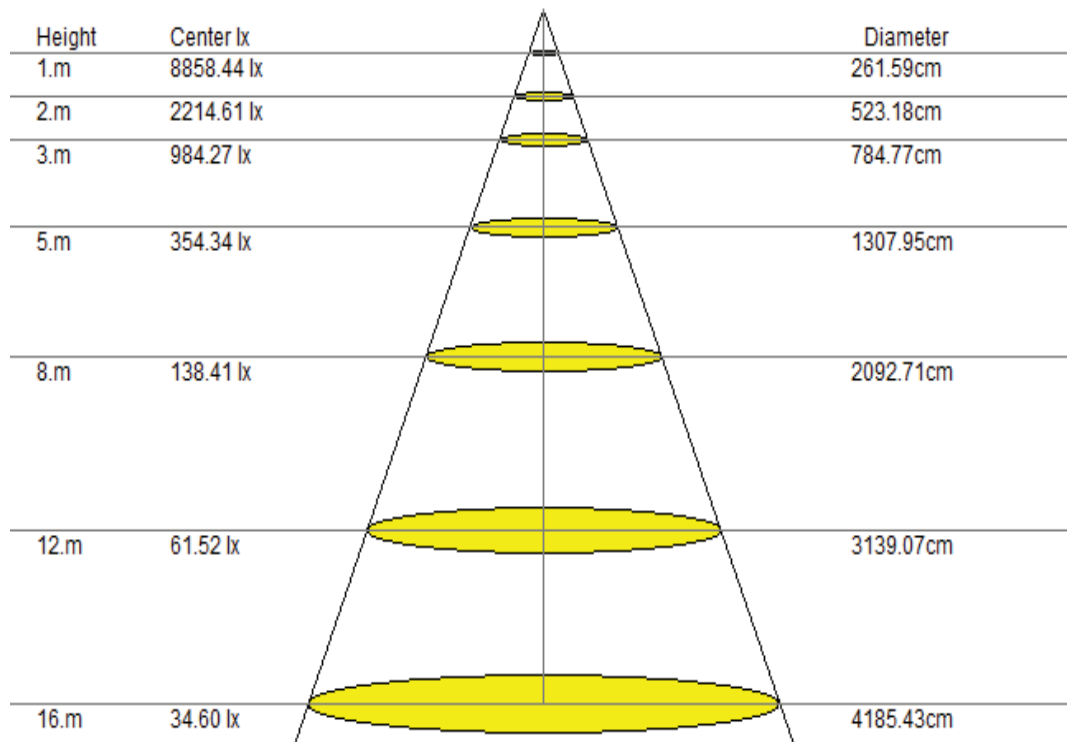
γ	45°	50°	55°	60°	65°	70°	75°	80°	85°
C0	190879	172748	152379	132307	115271	101457	911454	839697	7810915
C90	205805	193285	178234	154402	123597	106090	934530	8396	7414

Glare	Quality	Service Values Illuminance (lx)													
		2000	1000	500	≤300										
1.15	A														
1.5	B														
1.85	C														
2.2	D														
2.55	E														



Lum. Limiting Curve (C0/C90)

Lux-Distance Curve

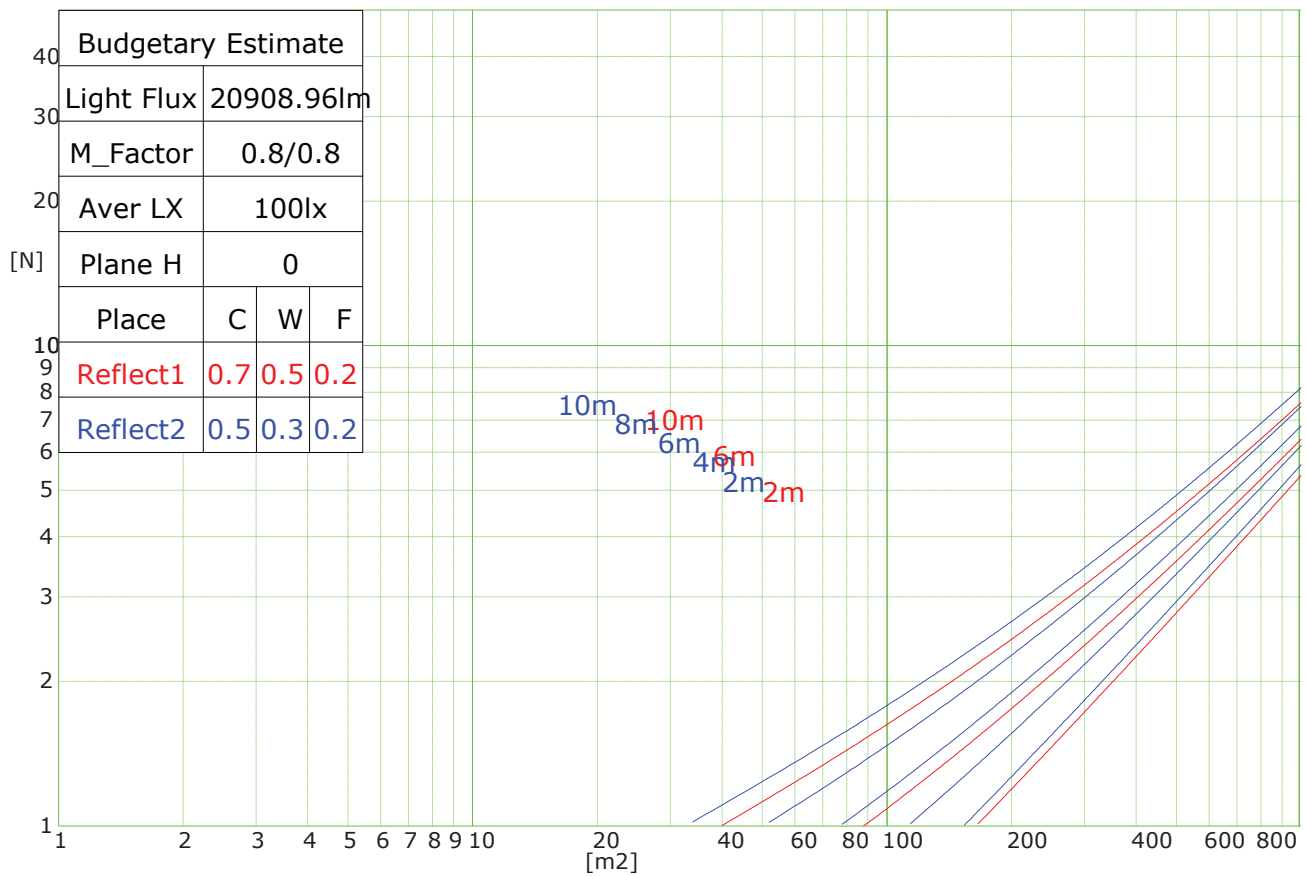


Beam Angle:105.20°(50%Imax)

Coefficients of Utilization

RHOCC	80			70			50			30			10			0
RHOW	50	30	10	50	30	10	50	30	10	50	30	10	50	30	10	0
RCR	COEFFICIENTS OF UTILIZATION FOR RHOFC=20															
0	1.19	1.19	1.19	1.16	1.16	1.16	1.11	1.11	1.11	1.06	1.06	1.06	1.02	1.02	1.02	1.00
1	1.08	1.07	1.06	1.07	1.05	1.04	1.03	1.01	1.00	0.98	0.96	0.94	0.91	0.89	0.87	0.82
2	0.95	0.93	0.91	0.94	0.91	0.89	0.91	0.88	0.85	0.87	0.84	0.81	0.82	0.79	0.76	0.71
3	0.83	0.80	0.78	0.82	0.79	0.77	0.81	0.77	0.74	0.78	0.74	0.70	0.74	0.70	0.66	0.61
4	0.72	0.70	0.68	0.72	0.69	0.67	0.72	0.67	0.64	0.70	0.65	0.61	0.67	0.62	0.57	0.53
5	0.64	0.61	0.60	0.64	0.61	0.58	0.64	0.59	0.56	0.63	0.57	0.53	0.61	0.55	0.50	0.47
6	0.57	0.54	0.53	0.57	0.54	0.52	0.57	0.53	0.49	0.57	0.51	0.47	0.56	0.50	0.45	0.41
7	0.51	0.48	0.47	0.51	0.48	0.46	0.52	0.47	0.44	0.52	0.46	0.42	0.51	0.45	0.40	0.36
8	0.46	0.43	0.42	0.46	0.43	0.41	0.47	0.43	0.39	0.47	0.42	0.38	0.47	0.41	0.36	0.33
9	0.42	0.39	0.38	0.42	0.39	0.37	0.43	0.39	0.36	0.44	0.38	0.34	0.44	0.37	0.32	0.30
10	0.38	0.36	0.34	0.39	0.36	0.34	0.40	0.35	0.32	0.40	0.35	0.31	0.41	0.34	0.30	0.27

Indoor Budgetary Estimate Chart



UGR Glare Index

Ceiling	70	70	50	50	30	70	70	50	50	30	
Wall	50	30	50	30	30	50	30	50	30	30	
Floor	20	20	20	20	20	20	20	20	20	20	
Room Size	Left to light axis direction of observation					Direction of light axis parallel observation					
X	Y										
2H	2H	14.8	15.9	15.1	15.9	16.5	14.5	15.9	14.9	16.1	16.4
	3H	16.2	17.5	16.6	17.7	18.1	16.2	17.3	16.5	17.8	18.0
	4H	17.0	18.1	17.3	18.5	18.7	16.9	18.0	17.2	18.6	18.9
	6H	17.6	18.5	18.1	18.9	19.0	17.5	18.4	17.8	19.0	19.0
	8H	17.9	18.8	18.1	19.0	19.3	17.9	18.8	17.9	19.0	19.4
4H	12H	17.8	18.9	18.2	19.1	19.6	17.9	18.6	18.1	19.3	19.4
	2H	15.7	16.6	15.9	16.8	17.0	15.5	16.6	15.7	16.8	17.0
	3H	17.3	18.4	17.7	18.3	18.7	17.4	18.3	17.5	18.4	18.8
	4H	18.2	19.0	18.6	19.1	19.4	18.0	18.9	18.4	19.2	19.5
	6H	18.8	19.5	19.1	19.9	20.1	18.7	19.5	19.0	19.7	20.2
8H	8H	19.1	19.7	19.4	19.9	20.4	19.0	19.6	19.3	19.9	20.2
	12H	19.2	20.0	19.5	20.2	20.4	19.2	19.7	19.5	20.1	20.6
	4H	18.5	19.2	19.0	19.4	19.9	18.4	19.1	18.7	19.4	19.9
	6H	19.4	19.9	19.9	20.2	20.5	19.3	19.8	19.7	20.1	20.6
	8H	19.6	20.2	20.1	20.5	21.0	19.7	20.1	20.0	20.4	21.0
12H	12H	20.0	20.4	20.5	20.8	21.2	19.9	20.3	20.3	20.8	21.2
	4H	18.6	19.2	18.9	19.4	19.8	18.5	19.1	18.8	19.5	19.9
	6H	19.5	20.0	19.9	20.2	20.7	19.5	19.8	19.7	20.2	20.7
	8H	19.8	20.4	20.4	20.5	21.0	19.9	20.1	20.2	20.6	21.0